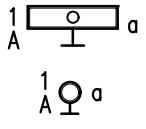
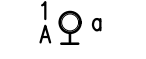


ANY MODIFICATIONS TO THESE PLANS OR RE-USE OF THESE PLANS MUST BE APPROVED BY AND SIGNED BY THE ARCHITECT.

LIGHTING LEGEND



WALL MOUNTED LIGHT FIXTURE (SEE SCHEDULE)



WALL MOUNTED LIGHT FIXTURE (SEE SCHEDULE)

LIGHTING CONTROLS

- MS** SINGLE POLE SWITCH 20A 120/277V UON CENTERLINE MOUNTED 48" AFF
K: KEY TYPE M: MOTOR RATED
- SS** THREE WAY 20A 120/277V SWITCH - UON CENTERLINE MOUNTED 48" AFF
- FS** FOUR WAY WALL MOUNTED SWITCH - UON CENTERLINE MOUNTED 48" AFF
- DS** DIMMER SWITCH - UON CENTERLINE MOUNTED 48" AFF
- TS** TIME SWITCH AS INDICATED. UON MOUNT TOP OF ENCLOSURE 66" AFF
- CS** CEILING MOUNTED DAYLIGHT DIMMING OCCUPANCY SENSOR.
- OS** CEILING MOUNTED OCCUPANCY SENSOR.
- HS** WALL MOUNTED OCCUPANCY SENSOR. UON CENTERLINE MOUNTED 48" AFF
- HOS** WALL MOUNTED DIMMING OCCUPANCY SENSOR/MANUAL DAYLIGHT DIMMING CONTROL. UON CENTERLINE MOUNTED 48" AFF

GENERAL NOTES

- TEXT SHOWN ON PLANS ADJACENT TO LIGHTING FIXTURES SHALL DENOTE THE FOLLOWING:
LOWER CASE LETTER (BY FIXTURE OR SWITCH) INDICATES LIGHT SWITCH CONTROL. UPPER CASE LETTER INDICATES FIXTURE TYPE. NUMERAL INDICATES BRANCH CIRCUIT NUMBER.
- SHADED LIGHTING FIXTURE SYMBOLS THAT APPEAR ON PLANS INDICATE EMERGENCY LIGHTING FIXTURES AND SHALL BE INTERPRETED AS FOLLOWS:

LIFE SAFETY BRANCH CIRCUIT:

CRITICAL BRANCH CIRCUIT:

EMERGENCY LIGHT FIXTURE WITH BATTERY BACK UP:

(THE ABOVE SHALL APPLY TO ALL LIGHTING FIXTURE SYMBOLS SHOWN ON LEGEND).
- NUMERALS SHOWN ON PLANS ADJACENT TO WIRING DEVICES INDICATE BRANCH CIRCUIT NUMBER(S).
- STANDARD SYMBOLS SHOWN ON LEGEND MAY NOT ALL APPEAR ON PLANS. WHERE SYMBOL APPEARS ON PLANS FURNISH AND INSTALL AS SPECIFIED.
- ALL STANDARD SYMBOLS ON LEGEND THAT APPEAR ON PLANS WITH HIDDEN LINES SHALL BE EXISTING TO REMAIN (FOR REFERENCE ONLY). EXISTING SYMBOLS (AS DESCRIBED ABOVE) THAT APPEAR ON PLANS WITH AN ADJACENT ABBREVIATION SHALL BE INTERPRETED AS FOLLOWS:
E = EXISTING TO REMAIN.
D = EXISTING TO BE REMOVED. CONTRACTOR SHALL REMOVE DEVICE AND/OR EQUIPMENT AND UNLESS OTHERWISE NOTED REMOVE ALL UNUSED CONDUIT AND WIRING.
RL = EXISTING TO BE RELOCATED (SHOWN AT EXISTING LOCATION ON DEMOLITION PLAN). REFER TO INSTALLATION PLAN FOR NEW LOCATION. CONTRACTOR SHALL EXTEND WIRING TO NEW LOCATION AND RECONNECT.

ABBREVIATIONS

A	AMPERE
AC	ABOVE COUNTER
AF	AMPERE FRAME
AFCI	ARC FAULT CIRCUIT INTERRUPTER
AFF	ABOVE FINISHED FLOOR
AHU	AIR HANDLING UNIT
AIC	AMPERAGE INTERRUPTING CAPACITY
AL	ALUMINUM
ATS	AUTOMATIC TRANSFER SWITCH
AV	AUDIO VISUAL
AWG	AMERICAN WIRE GAUGE
BOB	BOTTOM OF BOX
C	CONDUIT
CAT	CATEGORY
CB	CIRCUIT BREAKER
CH	CHILLER
CKT	CIRCUIT
CLC	CENTER LINE
COB	CEILING
COB	CENTER OF BOX
CU	COPPER
DEG	DEGREE
DS	DISCONNECT SWITCH
EG	EQUIPMENT GROUND BAR
EC	ELECTRICAL CONTRACTOR
EF	EXHAUST FAN
EM	EMERGENCY
EMT	ELECTRICAL METALLIC TUBING
ENCL	ENCLOSURE
EMH	ELECTRIC WATER HEATER
EX	EXISTING
FA	FIRE ALARM
FBO	FURNISHED BY OTHERS
FCP	FIRE ALARM CONTROL PANEL
FCC	FIRE CONTROL CENTER
FATC	FIRE ALARM TERMINAL CABINET
FO	FIBER OPTIC
GFCI	GROUND FAULT CIRCUIT INTERRUPTER
G	GROUND
HOA	HAND-OFF-AUTOMATIC
HACR	HEATING/AIR CONDITIONING RATED
HPF	HIGH POWER FACTOR
HP	HORSEPOWER
HPS	HIGH PRESSURE SODIUM
IG	ISOLATED GROUND
IPTV	INTERNET PROTOCOL TELEVISION
J	JUNCTION BOX
KOMIL	THOUSAND CIRCULAR MILLS
KVA	KILOVOLT AMPERER
KW	KILOWATT
MCB	MAIN CIRCUIT BREAKER
MCC	MOTOR CONTROL CENTER
MDU	A/V & WIR. CABINET
MOP	MAIN DISTRIBUTION PANEL
MLO	MAINT LUGS ONLY
MTD	MOUNTED
MTS	MANUAL TRANSFER SWITCH
MW	MICROWAVE
NA	NOT APPLICABLE
NC	NORMALLY CLOSED
NEC	NATIONAL ELECTRICAL CODE
NEMA	NATIONAL ELECTRICAL MANUF. ASSOC.
NON FUSED	NON FUSED
NFPA	NATIONAL FIRE PROTECTION ASSOCIATION
NIC	NOT IN CONTRACT
NL	NIGHT LIGHT
NO	NORMALLY OPEN
NTE	NOT TO EXCEED
PR	PUSHBUTTON
PC	PHOTOCELL
POE	POWER OVER ETHERNET
PXI	PROVIDE AND INSTALL
PNL	PANEL
POIS	PLAIN OLD TELEPHONE SYSTEM
PVC	POLY VINYL CHLORIDE
RGS	RIGID GALVANIZED STEEL
SCA	SHORT CIRCUIT AMPS
SG	SINGLE GANG
SPD	SURGE PROTECTIVE DEVICE
STP	SHEILED TWISTED PAIR
STR	STRANDED
SWB	SWITCHBOARD
TC	TIME CLOCK
TOB	TOP OF BOX
TP	TWISTED PAIR
TR	TAMPER RESISTANT
TS	TIME SWITCH
TYP	TYPICAL
UC	UNDER COUNTER
UG	UNDERGROUND
UH	UNIT HEATER
UPS	UNINTERRUPTIBLE POWER SUPPLY
UON	UNLESS OTHERWISE NOTED
VAV	VARIABLE AIR VOLUME
V	VOLT
WP	WEATHERPROOF
WR	WEATHER RESISTANT
XMR	TRANSFORMER
ZG	TWO GANG

DEVICES

- ALL DEVICES ARE WHITE W/PLASTIC COVERS UON.
- ALL SWITCHES & ABOVE COUNTER DEVICES ARE Ø 48" TOB
- ALL RECEPTACLES & DATA OUTLETS ARE Ø 20" TOB
- A DIFFERENT MOUNTING HEIGHT IS Ø TOB
- EXTERIOR RECEPTACLES ARE GFCI AND WEATHER RESISTANT.
- ALL RECEPTACLES SERVICING LOCATIONS ACCESSIBLE TO CHILDREN SHALL BE TAMPER RESISTANT.

ELECTRIC NOTES

- CONTRACTOR SHALL BE QUALIFIED TO PERFORM THE WORK SPECIFIED HEREIN AND SHALL BE REGISTERED OR LICENSED IN ACCORDANCE WITH THE LOCAL JURISDICTION REQUIREMENTS.
- CONTRACTOR SHALL PROVIDE FOR AND ACQUIRE ALL NECESSARY PERMIT(S) AND INSPECTIONS AS MAY BE REQUIRED BY THE AUTHORITY(IES) HAVING JURISDICTION.
- INSTALLATION SHALL MEET OR EXCEED THE MINIMUM REQUIREMENTS OF THE APPLICABLE CODES IN FORCE OR ADOPTED BY THE AUTHORITIES HAVING JURISDICTION.
- NO CHANGE ORDERS - THE CONTRACTOR SHALL FURNISH ALL MATERIALS AND LABOR NECESSARY FOR THE INSTALLATION OF A COMPLETE AND FUNCTIONAL ELECTRICAL SYSTEM MEETING THE INTENDED PURPOSE OF THE PROJECT.
- THE CONTRACTOR SHALL MAKE A THOROUGH EXAMINATION OF THE SITE CONDITIONS AND CONTRACT DOCUMENTS.
- PRIOR TO COMMENCING WORK, THE CONTRACTOR SHALL COORDINATE WITH THE APPROPRIATE UTILITIES FOR METERING, TRANSFORMER AND SERVICE CONNECTION REQUIREMENTS.
- CONDUIT SHALL BE INSTALLED CONCEALED OR RECESSED IN A NEAT AND WORKMANLIKE MANNER. ALL CONDUIT SHALL BE INSTALLED PARALLEL OR PERPENDICULAR TO BUILDING LINES UNLESS OTHERWISE APPROVED BY OWNER. EXPOSED CONDUIT ON EXTERIOR WALLS OF FINISHED WALLS IS PROHIBITED UNLESS OTHERWISE REVIEWED AND APPROVED BY OWNER.
- CONDUIT SHALL BE EMT AND FITTINGS SHALL BE STEEL. FOR UNDERGROUND AND UNDER SLAB INSTALLATIONS, CONDUIT SHALL BE PVC OR IMC W/AN ASPHALTIC OR OTHER APPROVED CORROSION INHIBITING COATING.
- TO LIMIT WATER INTRUSION, SEAL ALL CONDUITS WHERE THE CONDUIT CONNECTS AN INTERIOR CONDUIT BODY TO AN EXTERIOR CONDUIT BODY OR LUMINAIRE.
- PROVIDE AN INDEPENDENT MEANS OF SUPPORT FOR CONDUIT INSTALLED ABOVE A CEILING WHERE THEY ARE DISTINGUISHABLE BY COLOR, TAGGING OR OTHER EFFECTIVE MEANS. THE CEILING SUPPORT SYSTEM SHALL BE PERMITTED TO SUPPORT BRANCH CIRCUIT WIRING WHERE INSTALLED IN ACCORDANCE WITH THE CEILING MANUFACTURER'S INSTRUCTIONS.
- PROVIDE AN INSULATED THROAT FITTING OR PLASTIC BUSHING FOR ALL 1" AND LARGER CONDUIT TERMINATIONS IN PANEL BOARDS, LOAD CENTERS, WIRWAYS AND DISCONNECT SWITCHES.
- PROVIDE GROUNDING BUSHINGS FOR ANY CONDUIT TERMINATIONS AT ECCENTRIC AND CONCENTRIC KNOCKOUTS IN DISCONNECTS, PANELBOARDS AND LOAD CENTERS OR WHEN REDUCING WASHERS ARE USED. BOND ALL JUNCTION AND PULL BOXES TO GROUND.
- WIRE/CABLES SHALL BE COPPER OR ALUMINUM AS ALLOWED BY CODE AND LISTED FRO THE INTENDED USE AND ENVIRONMENT. AMPACITIES ARE CALCULATED USING THE 75°C COLUMN.
- REFER TO BRANCH CIRCUIT SCHEDULE FOR MAXIMUM LENGTHS OF CONDUCTOR SIZE FOR HOMERUNS.
- ALL WIRING DEVICES SHALL BE TERMINATED AT THE SCREW IN A CLOCKWISE DIRECTION. THE PUSH-IN TERMINATIONS SHALL NOT BE USED.
- VERIFY DOOR SWINGS AND BACKSPASH HEIGHTS AT ROUGH IN.
- STAGGER WALL BOXES IN ALL WALLS BY AT LEAST ONE STUD FOR SOUND ATTENUATION. APPLY NECESSARY FIRE PROOFING OR SOUND INSULATION AS REQUIRED OR AS LISTED ON ARCHITECTURAL PLANS.
- PROVIDE A TYPED PANEL SCHEDULE REFLECTING INSTALLED CONDITIONS FOR ALL PANEL BOARDS WITH "SPACE" OR "SPARE" PERMANENTLY WRITTEN.
- SUPPORT WIRES FOR ELECTRICAL EQUIPMENT SHALL BE FASTENED AT BOTH ENDS SO AS TO BE TAUT. INSTALLATION OF ELECTRICAL CABLES AND CONDUIT SHALL BE SUCH THAT UNDULATIONS ARE KEPT TO A MINIMUM.
- "TYPICAL" NOTES APPLY TO ALL SIMILAR SITUATIONS.
- PERMANENTLY LABEL ALL JUNCTION BOX COVERS WITH CIRCUITS DESIGNATION (SOURCE, PHASE, ETC.) CONTAINED WITHIN.
- AT CONCLUSION OF PROJECT, PROVIDE OPERATING, INSTALLATION INSTRUCTIONS, AND WARRANTY DOCUMENTS TO THE OWNER FOR ALL INSTALLED EQUIPMENT. OPERATING, INSTALLATION, AND WARRANTY DOCUMENTS SHALL BE BOUND TOGETHER WITH INDEX INDICATING WHERE TO FIND INFORMATION ON THE VARIOUS EQUIPMENT.
- PROVIDE THE APPROPRIATE FIRE STOP SYSTEM AND/OR FIRE CAULK AT ANY PENETRATION BETWEEN RATED ASSEMBLIES.
- CONDUIT TERMINATION AT NEMA3R ENCLOSURES SHALL BE WITH MYERS HUBS FOR TOP PENETRATIONS AND LIQUID TIGHT SEALING RINGS OR SEALING LOCKNUTS FOR SIDE PENETRATIONS.
- FOR ALL LED LUMINAIRES, PERMANENTLY MARK EACH FIXTURE WITH TAG #, MANUFACTURER, MODEL NUMBER, INSTALLATION DATE, INSTALLING CONTRACTOR AND LENGTH OF MANUFACTURER'S WARRANTY.
- COORDINATE INSTALLATION OF RECEPTACLES SHOWN ADJACENT TO MILLWORK WITH ARCHITECTURAL ELEVATIONS SO THEY ARE ACCESSIBLE. LOCATIONS SHOWN ON PLAN ARE DIAGRAMMATIC.
- INSTALL ELECTRICAL HARDWARE SUPPORTING ELECTRICAL FED AND OTHER EQUIPMENT IN ACCORDANCE WITH THE WEIGHT REQUIREMENTS OF THE EQUIPMENT, FIXTURE, APPLIANCE, ETC.
- ALL EXHAUST FANS SHALL BE POWERED FROM NEAREST LIGHTING CIRCUIT UON, AND SHALL HAVE A 20A RATED TOGGLE DISCONNECT SWITCH IN A NEMA 1 RATED ENCLOSURE.
- ALL CONDUCTORS SHALL BE COLOR CODED AS FOLLOWS.

PHASE A	120/208V	BLACK	BROWN
PHASE B		RED	ORANGE
PHASE C		BLUE	YELLOW

POWER LEGEND



MANHOLE.



HAND HOLE.



CEILING OR WALL MOUNTED JUNCTION BOX. UON SIZE AS REQUIRED BY NEC.



MISCELLANEOUS PANELBOARD. AS INDICATED.



DRY TYPE TRANSFORMER. AS INDICATED.



HEAVY DUTY DISCONNECT SWITCH. NON FUSIBLE. UON MOUNT TOP OF ENCLOSURE 66" AFF



DUPLEX RECEPTACLE. 20A 120V UON CENTERLINE MOUNTED 18" AFF



FLOOR MOUNTED DUPLICATION RECEPTACLE.



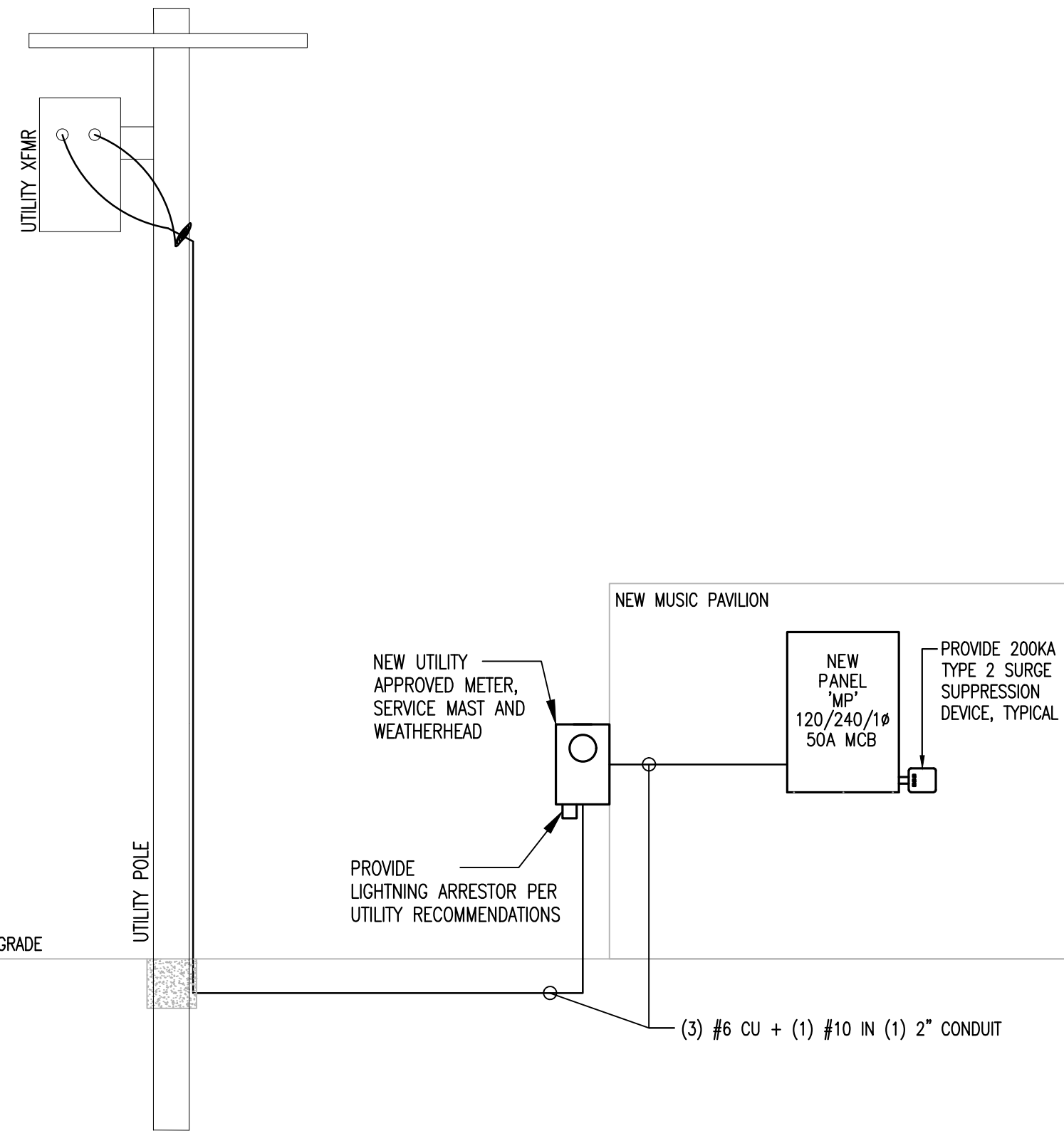
FLOOR MOUNTED DOUBLE DUPLICATION RECEPTACLE.



FLOOR MOUNTED COMBINATION (20A 120V) DUPLICATION RECEPTACLE/DATA COMMUNICATION OUTLET.



FLOOR MOUNTED COMBINATION (20A 120V) DOUBLE DUPLICATION RECEPTACLE/DATA COMMUNICATION OUTLET.



DRAWING INDEX

- E0.0 LEGEND, ABBREVIATIONS AND GENERAL NOTES
E1.0 ELECTRICAL SITE PLAN
E2.0 ELECTRICAL CONSTRUCTION FLOOR PLAN

APPLICABLE CODES

2023 FLORIDA BUILDING CODE 8TH EDITION
FLORIDA FIRE PREVENTION CODE 8TH EDITION WITH NFPA 1 AND 101 AMENDMENTS
NFPA 70, 2020 NATIONAL ELECTRICAL CODE
NFPA 72, 2019 FIRE ALARM & SIGNALING
NFPA 101, 2018 LIFE SAFETY CODE, FL EDITION

PAUL STRESING ASSOCIATES, INC.

14677 MAIN STREET
SUITE 101
E-MAIL: paul@paulstresingassociates.com
TELEPHONE (386) 462-0407
REGISTRATION NO. AR0013885 - CA NO. AAD003377

MUSIC PAVILLION
STARKE, FLORIDA

REVISIONS
ITEM:

ENGINEER SEAL

LUIS G. VARGAS JR., P.E.
FL Lic. No. 52139 Exp. 02-28-2027
This item has been digitally signed and sealed by Luis G. Vargas Jr., P.E. on the date adjacent to the seal.

Printed copies of this document are not considered signed and sealed and the signature must be verified on any electronic copies.

SHEET NO.

E.0.0

PANEL: MP

SERVICE: 120/ 240 V, 1Ø, 3W

CKT NUM		DESCRIPTION		CODE		BREAKER		CONNECTED LOAD (KVA)				BREAKER		DESCRIPTION		CKT NUM
								A	P	A	B					
1		BACK WALL REC.		REC	20	1		1.00			1.00	20	1	REC FLOOR BOX REC.		2
3		BACK WALL REC.		REC	20	1		1.00			1.00	20	1	REC FLOOR BOX REC.		4
5		BACK WALL REC.		REC	20	1		1.00			1.00	20	1	REC PERIMETER REC.		6
7		BACK WALL REC.		REC	20	1		1.00			1.00	20	1	REC PERIMETER REC.		8
9		CANOPY WALL REC.		REC	20	1		1.00			1.28	20	1	LTG TRUSS LIGHTING FRONT		10
11		CANOPY WALL REC.		REC	20	1		1.00			0.50	20	1	LTG TRUSS LIGHTING REAR		12
13		CANOPY WALL REC.		REC	20	1		1.00			0.50	20	1	LTG DMX CONTROLLER		14
15		CANOPY WALL REC.		REC	20	1		1.00			0.00			SPACE		16
17		RECEPTACLES (REC)		REC	20	1		0.36			0.00			SPACE		18
19		SPARE			20	1					0.00			SPACE		20
								4.4	4.0	3.8	2.5					
								CONNECTED LOAD (KVA)	DEMAND FACTOR	DEMAND LOAD (KVA)	MIN NEC LOAD (KVA)					
								2.3	1.25	2.3	2.8					
								12.4	*	11.2	11.2					
								0.0	1.0	0.0	0.0					
								0.0	1.0	0.0	0.0					
								0.0	1.0	0.0	0.0					
								0.0	1.0	0.0	0.0					
								0.0	1.0	0.0	0.0					
								0.0	1.0	0.0	0.0					
								0.0	1.25	0.0	0.0					
								0.0	1.0	0.0	0.0					
								14.6		13.5	14.0					
																58.4 AMPS

LUMINAIRE SCHEDULE

TAG	DESCRIPTION	MANUFACTURER	CATALOG NUMBER	VOLTS	LAMP TYPE	FIXTURE VA	LUMENS	MOUNT	LOCATION	NOTES	TAG
L1	4" WALL LIGHT	LITHONIA	CSS L48 AL03 MVOLT SSWV3 80CRI (IE10WCPHE)	MVOLT	LED	36	4896	WALL	AS SHOWN	1	L1
OL1	RGB SPOT LIGHT	CHAUVET	COLORADO 1QS	120	LED	74	3401	TRUSS	EXTERIOR	1	OL1
OL2	SPOP LIGHT	CHAUVET	OVATIONREVEP3IP	120	LED	277.2	7762	TRUSS	EXTERIOR	1	OL2
S	EXTERIOR SCONCE	LUMINIS	SY300 L1L10 WD 35K 120 SWK (REM7) SNT XXX XXX	120	LED	13	924	WALL	EXTERIOR	1	S

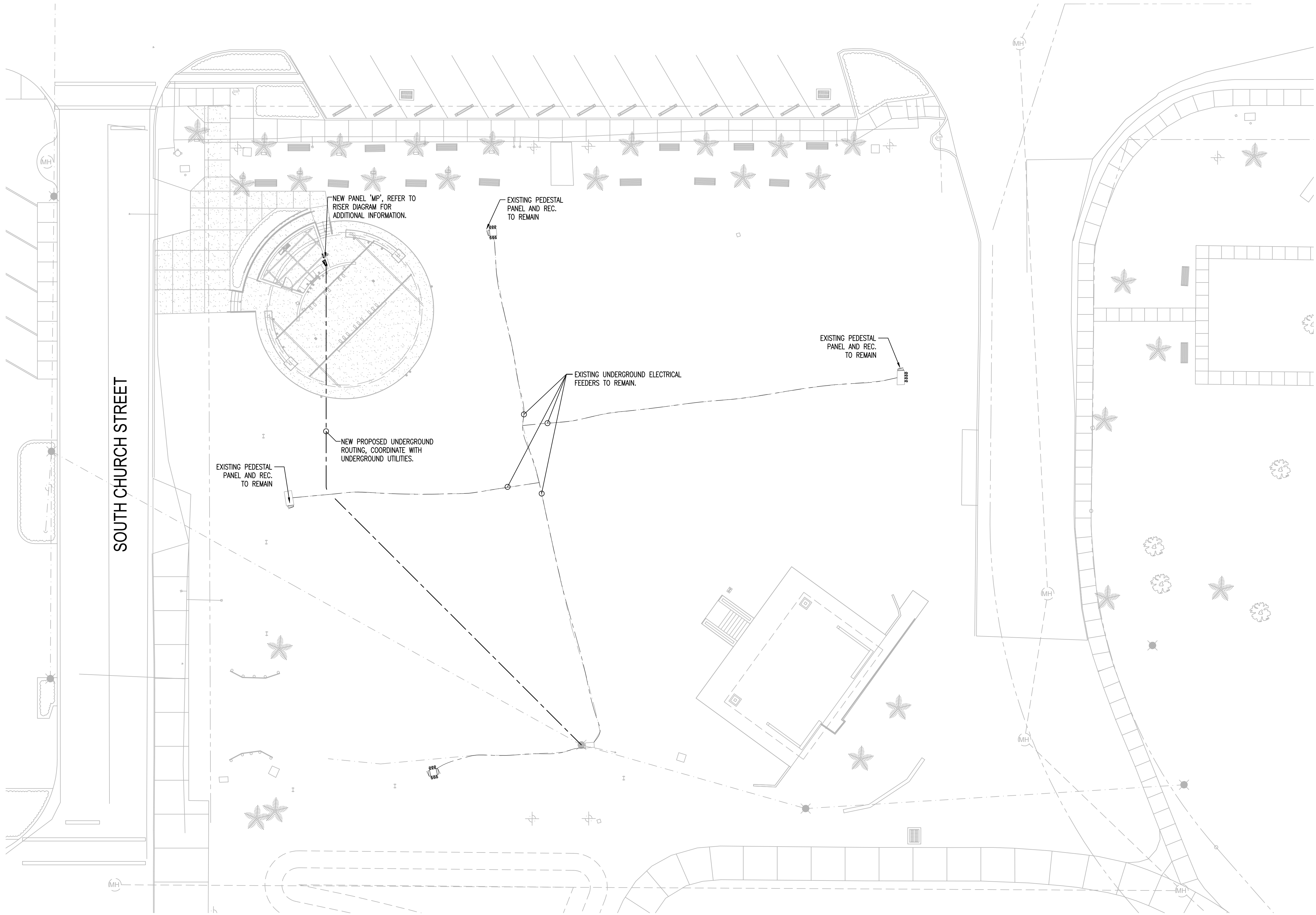
GENERAL NOTES

- QTY SHOWN IN SCHEDULE IS FOR ENERGY CALCULATIONS ONLY. VERIFY FINAL QUANTITY PER CONTRACT DRAWINGS.
- ALL FIXTURES SHALL BE SUPPLIED WITH MOUNTING EQUIPMENT IN COORDINATION WITH CIVIL AND ARCHITECTURAL DETAILS.
- 1 ALL FIXTURE FINAL SELECTION BY OWNER/ARCHITECT. CONTROL AND LOAD TO BE VERIFIED BY ENGINEER.

ANY MODIFICATIONS TO THESE PLANS OR RE-USE OF THESE PLANS MUST BE APPROVED BY AND SIGNED BY THE ARCHITECT.

GENERAL NOTES

1. CONTRACTOR SHALL COORDINATE ALL WORK WITH ELECTRIC AND TELECOM UTILITIES REQUIREMENTS PRIOR TO BID AND/OR CONSTRUCTION.
2. GROUP ALL CONDUITS IN BUILDING AS CLOSE TOGETHER AS CODE PERMITS AND RUN PARALLEL TO PROVIDE A CLEAN LOOK.
3. CONTRACTOR SHALL PROVIDE ALL UNDERGROUND CONDUITS AS REQUIRED. COORDINATE ALL REQUIREMENTS WITH SERVING UTILITY COMPANY REQUIREMENTS PRIOR TO BID AND/OR CONSTRUCTION.
4. PROVIDE ASTRONOMICAL TIME-CLOCK WITH PHOTOCELL OVERRIDE FOR CONTROL OF ALL OUTDOOR LIGHTING VIA MECHANICAL LIGHTING CONTRACTOR. ALL EXTERIOR EQUIPMENT SHALL BE NEMA 3R. COORDINATE LOCATIONS IN FIELD WITH APPROVED EQUIPMENT SUBMITTALS/SHOP DRAWINGS AND ADJACENT HOUSE SERVICE PANELBOARD AND EQUIPMENT IN A WORKMAN LIKE MANNER.
5. THIS DESIGN ASSUMES AVAILABLE FAULT CURRENT AS SHOWN FOR UTILITY PAD MOUNTED TRANSFORMER. ELECTRICAL CONTRACTOR SHALL CONTACT UTILITY COMPANY TO OBTAIN THE ACTUAL AVAILABLE FAULT CURRENT AS SOON AS CONTRACT IS AWARDED, PRIOR TO ORDERING OR APPROVING RELEASE OF EQUIPMENT AND REPORT UPDATED INFORMATION TO ENGINEER IN WRITING. ENGINEER WILL CALCULATE AVAILABLE FAULT CURRENTS AND RELAY RESULTS TO THE ELECTRICAL CONTRACTOR FOR COMPLIANCE WITH THE NEC 110.24(A),(B) FIELD MARKING REQUIREMENTS. ELECTRICAL CONTRACTOR TO PROVIDE ARC-FLASH HAZARD WARNING FIELD MARKING PER NEC 110.16. ELECTRICAL CONTRACTOR TO PROVIDE SERIES RATED LABELING PER NEC 110.22(B) WHERE THERE IS AN APPLIED SERIES RATING AS SHOWN ON THE DRAWINGS. ANY ADDITIONAL COST FOR FAILURE TO COMPLY WITH THE ABOVE REQUIREMENTS WILL BE STRICTLY AT CONTRACTOR'S EXPENSE.
6. REFER TO FAULT CURRENT TABLE FOR WORST CASE AFC AT PANELS PER FLOOR. EC TO ENSURE PANELBOARDS ARE SUITABLE FOR FAULT CURRENT ENVIRONMENT (BUS AFC).



ELECTRICAL SITE PLAN

SCALE: 1/16"=1'-0"



Call 811 or visit sunshine811.com two full business days before digging to have buried facilities located and marked.

Check positive response codes before you dig!

COPYRIGHT © 2024 PAUL STRESING ASSOC.

DRAWN BY: RULY	DATE: 02/20/25	PROJECT NO. 24-545
-------------------	-------------------	-----------------------

PAUL STRESING ASSOCIATES, INC.
14677 MAIN STREET
SUITE 101
E-MAIL: paul@paulstresingassociates.com
TELEPHONE (386) 482-6407
REGISTRATION NO. AR001386 - CANO A4003377

MUSIC PAVILLION
STARKE, FLORIDA

REVISIONS ITEM	DATE

ENGINEER SEAL

LUIS G. VARGAS JR., P.E.
FL Lic. No. 52139 Exp. 02-28-2027
This item has been digitally signed and sealed by Luis G. Vargas Jr., P.E. on the date adjacent to the seal.

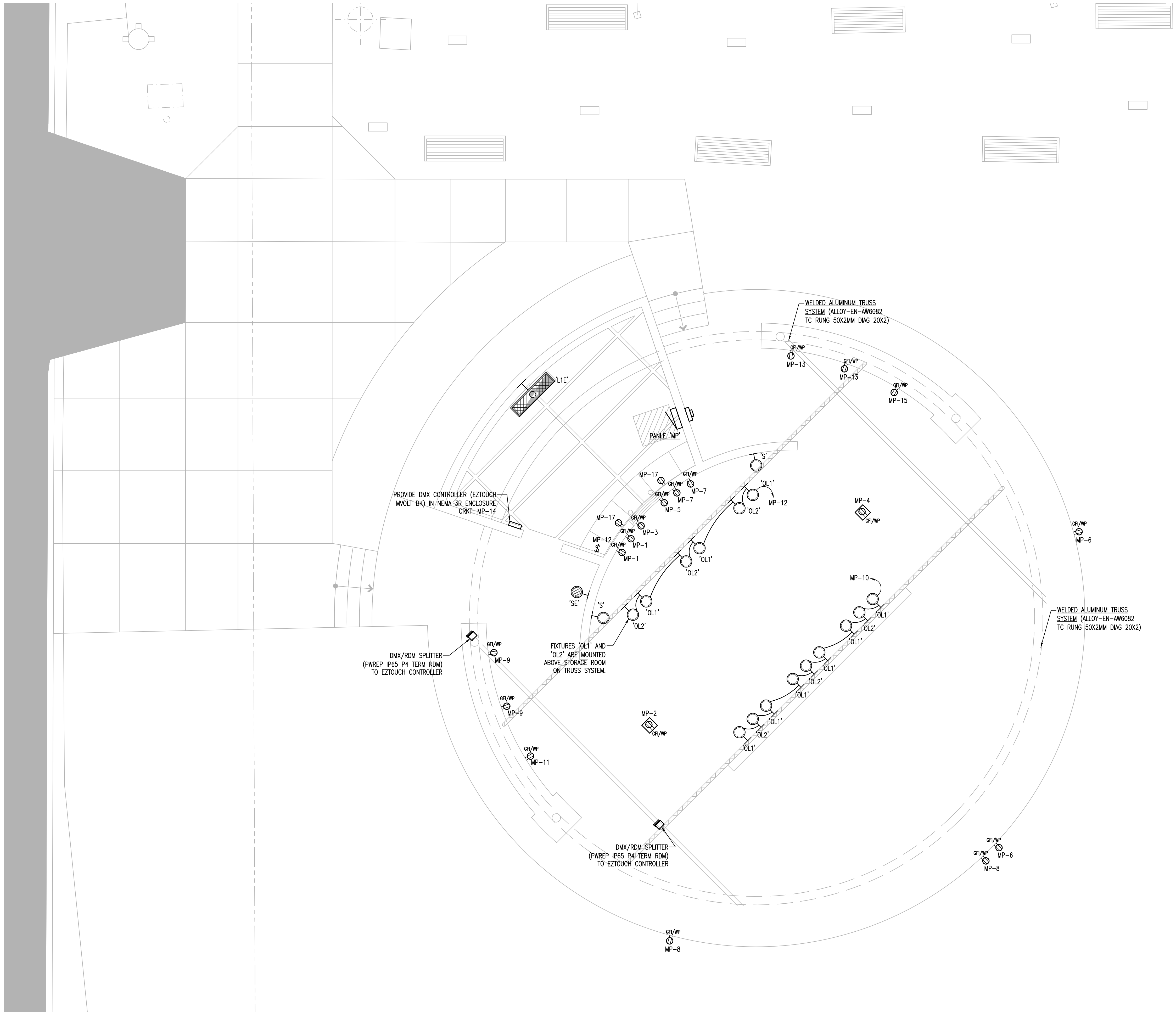
Printed copies of this document are not considered signed and sealed and the signature must be verified on any electronic copies.

SHEET NO.

E.1.0



ANY MODIFICATIONS TO THESE PLANS OR RE-USE OF THESE PLANS MUST BE APPROVED BY AND SIGNED BY THE ARCHITECT.



ELECTRICAL CONSTRUCTION FLOOR PLAN

SCALE: 1/4"=1'-0"



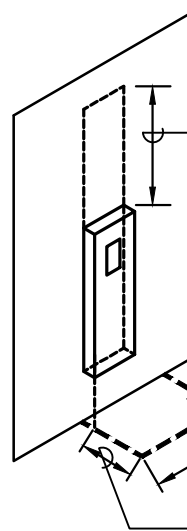
COPYRIGHT © 2024 PAUL STRESING ASSOC.

DEDICATED
WORKING SPACE



INSTALL THIS SIGN ON
A PANEL IN EACH
ELECTRICAL ROOM

INSTALL THIS SIGN
ON THE EXTERIOR
OF EACH
ELECTRICAL ROOM



INSTALL 2" RED AND WHITE FLOOR
TAPE, BRADY TOUCHSTRIP #104318,
36"/42" DEEP AND WIDTH OF
ELECTRICAL EQUIPMENT

36" FOR VOLTAGE LESS THAN 300V
42" FOR VOLTAGE MORE THAN 300V

NEC 110.26(E)- THE SPACE EQUAL TO THE WIDTH AND
DEPTH OF THE EQUIPMENT AND EXTENDING TO A HEIGHT OF
6" ABOVE THE EQUIPMENT SHALL BE DEDICATED TO THE
ELECTRICAL INSTALLATION.

PAUL STRESING ASSOCIATES, INC.

14617 MAIN STREET
SUITE 101
ALBUQUERQUE, NM 87111
E-MAIL: paul@paulstresingassociates.com
TELEPHONE: (505) 462-4407
REGISTRATION NO. A00013885 - CA NO. A0003377

MUSIC PAVILION
STARKE, FLORIDA

REVISIONS
ITEM:

REV# DATE:

ENGINEER SEAL

LUIS G. VARGAS JR., P.E.
FL Lic. No. 52139 Exp. 02-28-2027
This item has been digitally
signed and sealed by Luis G.
Vargas Jr., P.E. on the date
adjacent to the seal.

Printed copies of this
document are not considered
signed and sealed and the
signature must be verified on
any electronic copies.

SHEET NO.

E2.0

