



STARKE POLICE OFFICERS' RETIREMENT SYSTEM

July 29, 2015

PERFORMANCE EVALUATION REPORT



Richard A. Campbell, CFA
President and Senior Consultant



PERFORMANCE COMPARISONS

Morningstar Category Averages - Morningstar has developed fund category averages on several data points to enable investors to compare the performance of their individual fund holdings with that of a universe of comparable funds.

Morningstar classifies funds into categories according to their actual holdings rather than the objectives stated by the fund management company. They then calculate category average data for several metrics, including performance, expenses, portfolio exposures, and more. Investors can use these category average data points to *see how any individual fund stacks up against the category as a whole.*

As in the Plan's revised IPS, the **CATEGORY AVERAGES** and the **MARKET INDICES** (below) are the **DUAL BENCHMARK COMPARISONS** for Plan Performance. Benchmarks (below) are retained primarily for asset allocation and information purposes.

Disclaimer

The information contained in this report is based upon sources Dover Consulting Group (a division of Dover Partners, Inc.) believes to be reliable, but is not guaranteed by Dover Consulting Group and does not purport to be a complete statement or summary of all the available data.

The portfolio performance calculation does not include checking account assets and is net of investment management fees for the periods beginning September 31, 2003. All performance prior to that date was reproduced from reports of the previous vendor(s) of investment services to the System. All fund return data supplied by: Morningstar, Inc.

The **PLAN'S POLICY INDEX ALLOCATION** is a composite of the following:

Start On:	Re-Balance Frequency	S&P 500	Russell 2000	MSCI EAFE	Barclays Capital US Aggregate Bond Index	Barclays Capital US Government/ Credit Intermediate	Citigroup 3 month T-bill	MSCI Emerging Markets	FTSE Emerging Markets
10/1/03	Quarterly	58.0%	0.0%	0.0%	0.0%	38.0%	4.0%		
1/1/07	Quarterly	60.0%	0.0%	0.0%	35.0%	0.0%	5.0%		
10/1/09	Quarterly	35.0%	15.0%	10.0%	39.0%	0.0%	1.0%		
10/1/10	Quarterly	30.0%	15.0%	10.0%	43.0%	0.0%	2.0%		
1/1/11	Quarterly	25.0%	15.0%	10.0%	43.0%	0.0%	2.0%	5.0%	
4/1/13	Quarterly	25.0%	15.0%	10.0%	43.0%	0.0%	2.0%	0.0%	5.0%
		S&P 500	CRSP Small Cap	FTSE Dev Mkts ex US	FTSE Emerging Markets	Barclays Capital US Aggregate Bond Index	Citigroup 3 month T-bill	MSCI US REIT Idx.	
10/1/2013	Quarterly	25.0%	25.0%	5.0%	5.0%	30.0%	5.0%	5.0%	
10/1/2014	Quarterly	33.0%	15.0%	8.0%	7.0%	30.0%	2.0%	5.0%	

**Pension Trust
Performance Summary
6/30/2015**

**Fiscal YTD (9 months)
2.83%**

The **Starke Police Officers' Retirement System** investment returns for the period ending June 20, 2015 were as follows:

	Qtr.	YTD	Return			Std. Deviation (Risk)	
			1Yr.	3Yr.	5Yr.	3Yr.	5Yr.
Vanguard 500 Idx Admiral	0.28%	1.23%	7.40%	17.27%	17.31%	7.43%	12.72%
Large Cap Blend*	-0.08%	1.05%	5.15%	16.11%	15.38%	7.21%	13.31%
S&P 500 Idx.	0.28%	1.23%	7.42%	17.31%	17.34%	7.43%	12.72%
Vang. High Dividend Yld. ETF	-0.31%	-0.58%	4.62%	15.29%	17.33%	8.01%	10.85%
Large Cap Value*	-0.14%	0.05%	3.10%	15.65%	14.89%	7.36%	13.26%
FTSE High Dividend Yld. Idx.	-0.30%	-0.56%	4.69%	15.38%	17.43%		
Vang. Developed Mkts ETF	1.03%	6.62%	-3.97%	11.99%	9.84%	10.14%	15.99%
Foreign Blend*	1.14%	5.88%	-3.25%	10.79%	8.93%	9.08%	15.84%
FTSE Developed Mkt Idx.	0.84%	6.03%	-3.74%	12.22%	9.94%	9.95%	15.68%
Vang. Small Cap ETF	-0.56%	4.20%	5.23%	18.73%	18.15%	9.58%	17.17%
Small Cap Blend*	-0.13%	3.48%	3.52%	16.87%	15.96%	10.16%	17.53%
CRSP Small Cap Idx.	-0.59%	4.18%	5.21%	19.11%	N/A	9.73%	N/A
Vang. Emerging Mkts ETF	1.73%	3.84%	-2.41%	4.14%	4.14%	9.71%	17.91%
Diversified Emerg. Mkts.*	0.69%	1.83%	-6.62%	3.55%	3.34%	9.39%	17.16%
FTSE Emerging Mkt. Idx.	2.01%	3.96%	-1.83%	5.09%	4.31%	9.26%	16.88%
Baird Core Plus Bond - Inst.	-1.56%	0.22%	1.91%	3.09%	4.84%	3.40%	3.27%
Intermediate-Term Bond*	-1.51%	0.00%	1.03%	2.31%	3.71%	2.96%	2.79%
Barclays Universal Idx.	-1.40%	0.30%	1.61%	2.33%	3.81%	2.82%	2.82%
Vang. ST Corp. Bond ETF	-0.21%	1.01%	1.17%	2.37%	3.05%	1.71%	1.97%
Short-Term Bond	-0.05%	0.74%	0.50%	1.35%	1.79%	1.17%	1.24%
Barclays US 1-5Yr Corp. Idx.	-0.21%	1.03%	1.30%	2.54%	3.26%		
Vang. REIT Idx ETF	-10.48%	-6.24%	3.79%	8.63%	14.22%	13.68%	15.65%
MSCI US REIT Idx.	-9.20%	-5.19%	4.05%	8.26%	13.41%	12.37%	15.00%
Real Estate*	-10.44%	-6.19%	3.93%	8.71%	14.29%	13.67%	15.66%
Total Account	-1.41%	-0.29%	1.82%	8.40%	9.04%	4.53%	8.31%
Starke Active Mgr Categ Comp*	-0.82%	1.22%	2.11%	10.15%	10.54%	5.03%	9.63%
Starke Policy Index Allocation	-0.82%	1.38%	3.14%	9.83%	10.31%	4.63%	7.38%

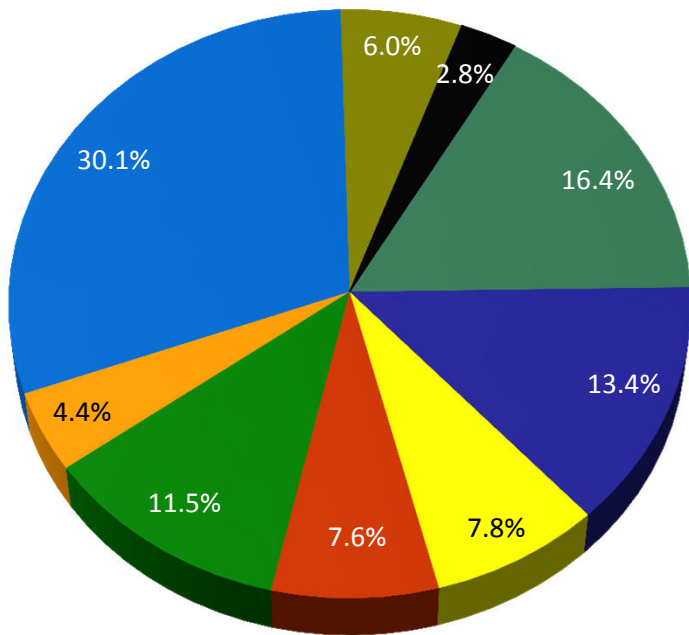
*Morningstar Category Average Returns



Asset Allocation 6/30/15

ASSET ALLOCATION

56.7 Stocks/43.3% Bonds, REITs & Cash*



- Money Market Fund(at Salem)
- Vanguard S&P 500 Index Fund Admiral
- Vanguard High Div. Yld. ETF
- Vanguard FTSE Dev. Mkts Idx ETF
- Vanguard FTSE Emerging Mkts Idx ETF
- Vanguard Small Cap Index ETF
- Vanguard REIT Index ETF
- Baird Core Plus Bond Fund Institutional
- Vanguard Short Term Corp. Bond Idx ETF

* May not total to 100% due to rounding

Hold current positions for time being.

Starke Police Officers' Retirement System Manager Asset Allocation 6/30/2015

As of	S&P 500 Index	International Equity	Vanguard Small-Cap ETF	Vanguard High Div ETF	Vanguard REIT Index	Vanguard Em. Mkts. Index	Baird Core Plus Fund	Sht Corp Fixed Income	Cash	Total
	EQ IDX	INT'L EQ	SC IDX	HI DIV	REIT	EM MKTS	MGD FX	SHT FX	CASH	
December '14	\$1,216,809	\$173,263	\$497,788	-	\$146,124	\$172,806	\$1,035,176	\$248,844	\$368,148	\$3,858,958
January	\$1,181,517	\$174,498	\$487,121	-	\$156,136	\$172,461	\$1,060,926	\$251,156	\$363,844	\$3,847,659
February	\$509,503	\$287,064	\$414,879	\$507,230	\$179,829	\$280,812	\$1,103,621	\$220,247	\$405,946	\$3,909,131
March	\$501,427	\$282,315	\$420,994	\$494,629	\$181,857	\$274,565	\$1,107,973	\$220,577	\$412,327	\$3,896,664
April	\$506,212	\$293,231	\$412,406	\$503,029	\$171,223	\$294,920	\$1,105,503	\$220,357	\$408,700	\$3,915,581
May	\$512,706	\$293,089	\$420,719	\$504,912	\$170,705	\$284,440	\$1,103,796	\$220,220	\$407,239	\$3,917,826
June	\$595,163	\$281,039	\$417,249	\$487,531	\$161,106	\$274,632	\$1,090,694	\$218,845	\$306,988	\$3,833,247
July										\$0
August										\$0
September										\$0
October										\$0
November										\$0
December										\$0

Investment Related Fees as of 6/30/2015

MUTUAL FUND	EXPENSE RATIO	AVG. FUND*
Vanguard Developed Markets ETF	0.09%	0.55%
Vanguard S&P 500 Index – Admiral*	0.05%	0.34%
Vanguard High Dividend Yield ETF	0.10%	0.32%
Vanguard Small Cap ETF	0.09%	0.36%
Vanguard Emerging Markets ETF	0.15%	0.68%
Baird Core Plus Bond Institutional	0.30%	0.85%
Vanguard ST Corp Bond Market Index ETF	0.12%	0.20%
Vanguard REIT Index ETF	0.10%	0.38%
Dollar Weighted Plan Average	0.20%	

Current Investment Consulting & Custodial Fees: **0.39%**

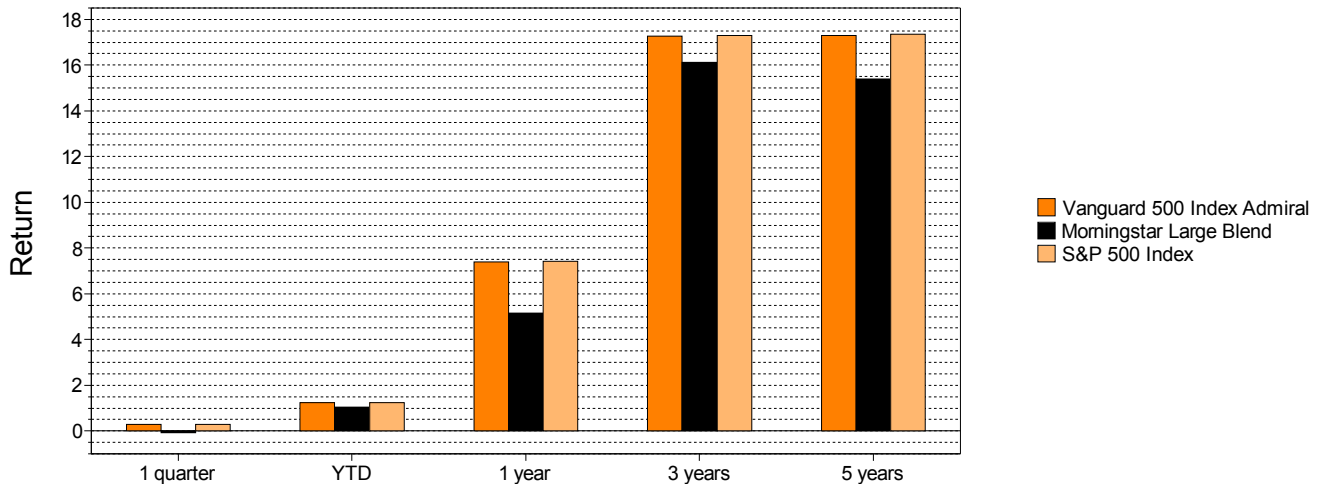
TOTAL INVESTMENT- RELATED FEES (Excludes legal, accounting & actuary) **0.59%**

*Category Average per Morningstar – ETF Average used for S&P 500 Index Fund

ETF Performance

Manager vs Benchmark: Return through June 2015

(not annualized if less than 1 year)

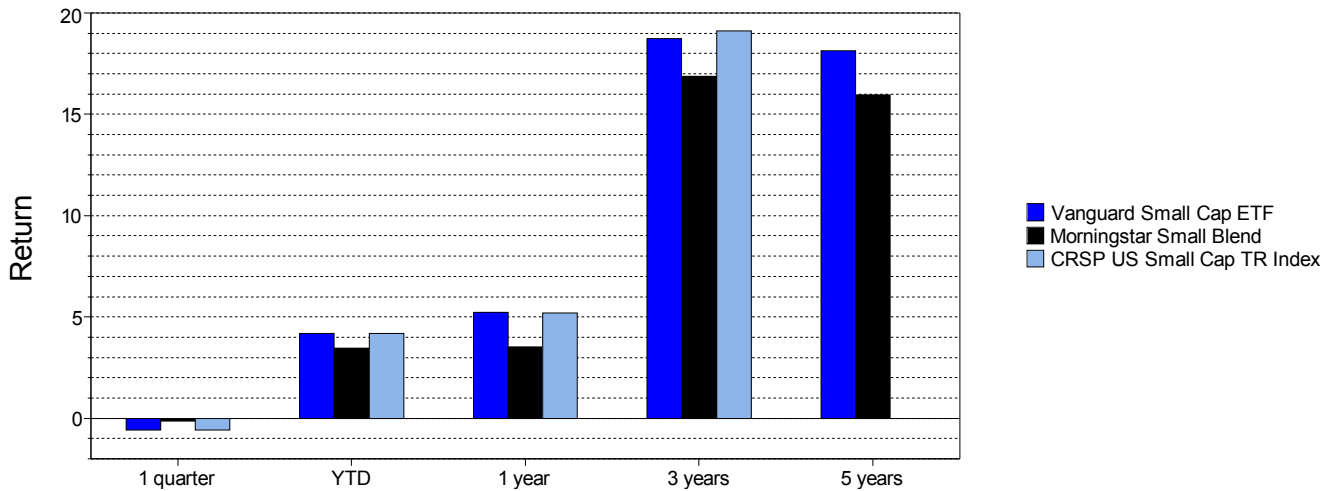


	1 quarter	YTD	1 year	3 years	5 years
Vanguard 500 Index Admiral	0.28%	1.23%	7.40%	17.27%	17.31%
Morningstar Large Blend	-0.08%	1.05%	5.15%	16.11%	15.38%
S&P 500 Index	0.28%	1.23%	7.42%	17.31%	17.34%

as of June 2015

Manager vs Benchmark: Return through June 2015

(not annualized if less than 1 year)



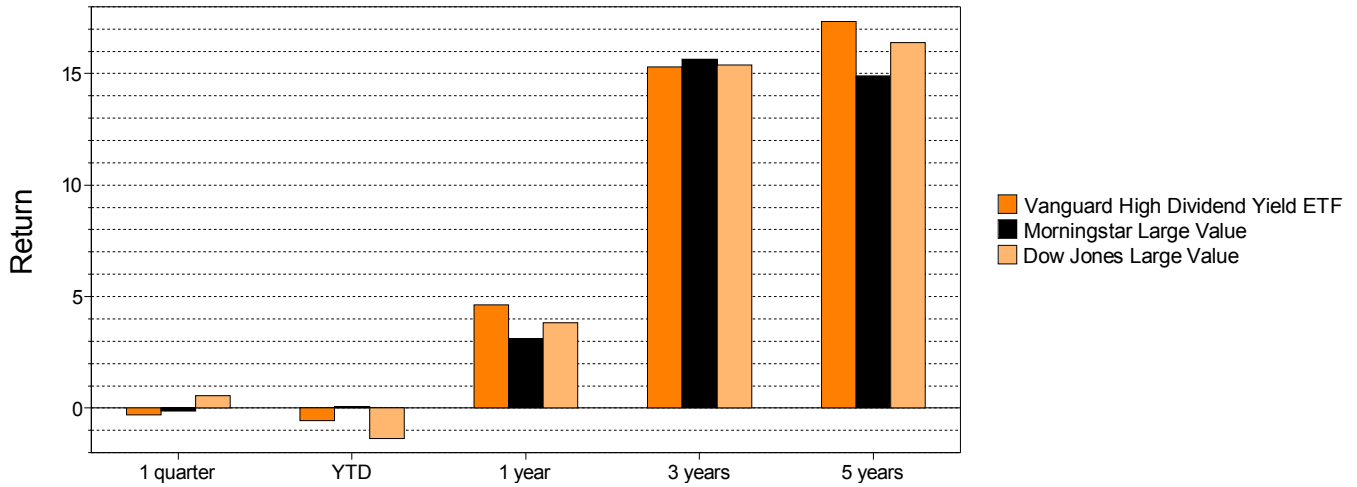
	1 quarter	YTD	1 year	3 years	5 years
Vanguard Small Cap ETF	-0.56%	4.20%	5.23%	18.73%	18.15%
Morningstar Small Blend	-0.13%	3.48%	3.52%	16.87%	15.96%
CRSP US Small Cap TR Index	-0.59%	4.18%	5.21%	19.11%	N/A

as of June 2015

ETF Performance

Manager vs Benchmark: Return through June 2015

(not annualized if less than 1 year)



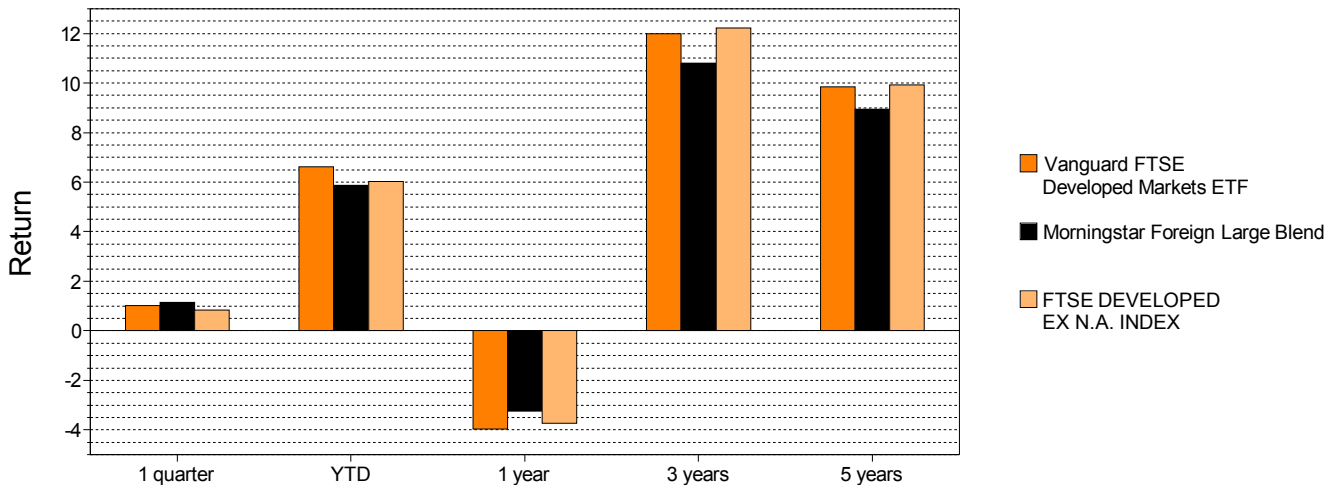
	1 quarter	YTD	1 year	3 years	5 years
Vanguard High Dividend Yield ETF	-0.31%	-0.58%	4.62%	15.29%	17.33%
Morningstar Large Value	-0.14%	0.05%	3.10%	15.65%	14.89%
Dow Jones Large Value	0.55%	-1.35%	3.83%	15.39%	16.38%

as of June 2015

ETF Performance

Manager vs Benchmark: Return through June 2015

(not annualized if less than 1 year)

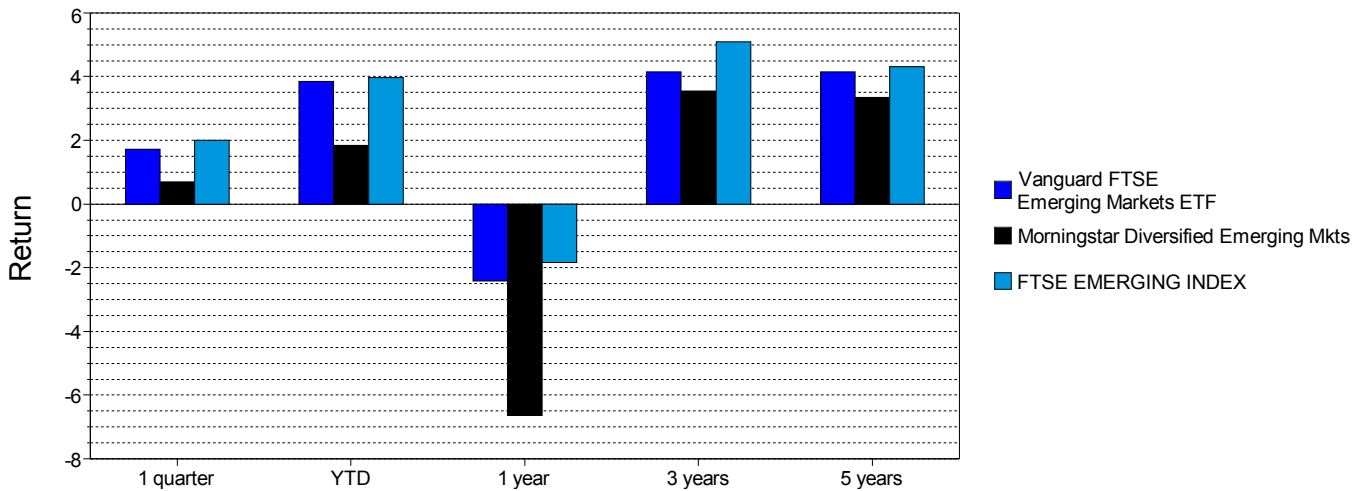


	1 quarter	YTD	1 year	3 years	5 years
Vanguard FTSE Developed Markets ETF	1.03%	6.62%	-3.97%	11.99%	9.84%
Morningstar Foreign Large Blend	1.14%	5.88%	-3.25%	10.79%	8.93%
FTSE DEVELOPED EX N.A. INDEX	0.84%	6.03%	-3.74%	12.22%	9.94%

as of June 2015

Manager vs Benchmark: Return through June 2015

(not annualized if less than 1 year)



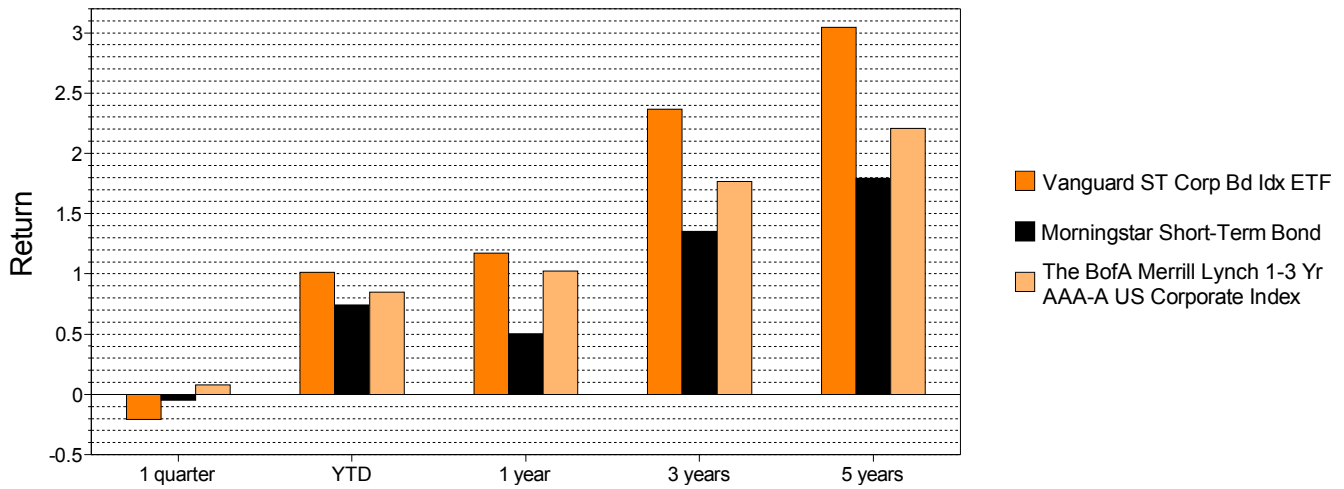
	1 quarter	YTD	1 year	3 years	5 years
Vanguard FTSE Emerging Markets ETF	1.73%	3.84%	-2.41%	4.14%	4.14%
Morningstar Diversified Emerging Mkts	0.69%	1.83%	-6.62%	3.55%	3.34%
FTSE EMERGING INDEX	2.01%	3.96%	-1.83%	5.09%	4.31%

as of June 2015

ETF Performance

Manager vs Benchmark: Return through June 2015

(not annualized if less than 1 year)

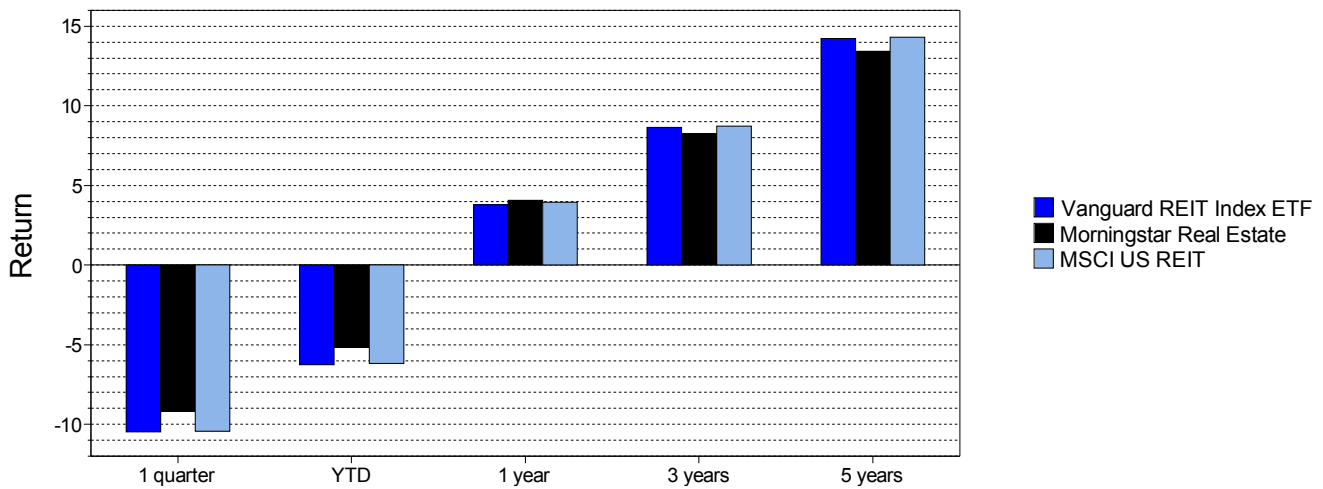


	1 quarter	YTD	1 year	3 years	5 years
Vanguard ST Corp Bd Idx ETF	-0.21%	1.01%	1.17%	2.37%	3.05%
Morningstar Short-Term Bond	-0.05%	0.74%	0.50%	1.35%	1.79%
The BofA Merrill Lynch 1-3 Yr AAA-A US Corporate Idx	0.08%	0.85%	1.02%	1.76%	2.21%

as of June 2015

Manager vs Benchmark: Return through June 2015

(not annualized if less than 1 year)



	1 quarter	YTD	1 year	3 years	5 years
Vanguard REIT Index ETF	-10.48%	-6.24%	3.79%	8.63%	14.22%
Morningstar Real Estate	-9.20%	-5.19%	4.05%	8.26%	13.41%
MSCI US REIT	-10.44%	-6.19%	3.93%	8.71%	14.29%

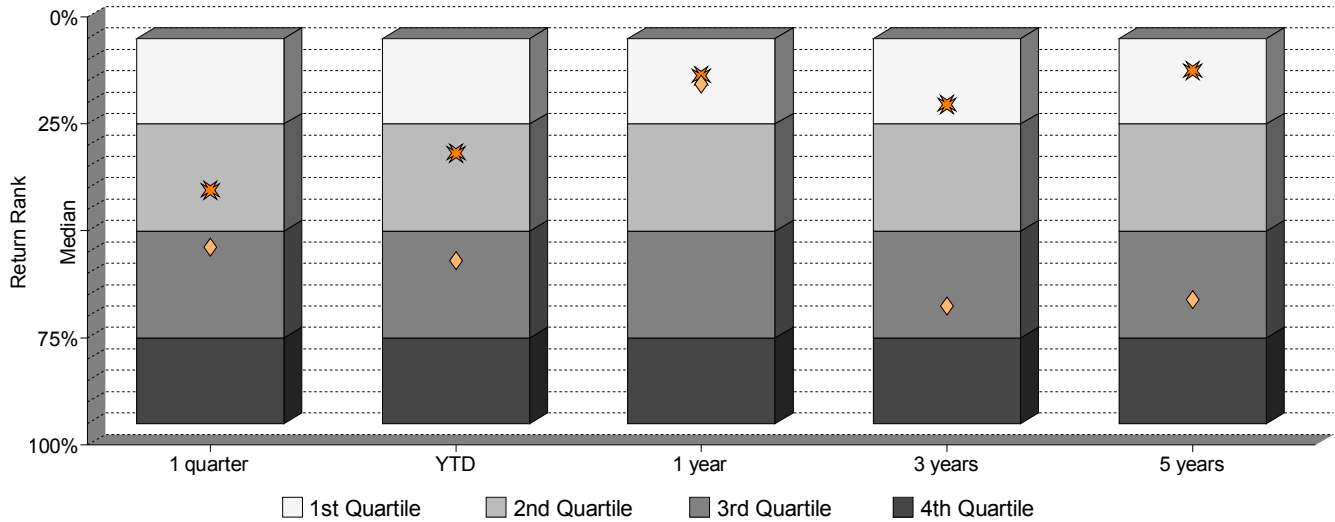
as of June 2015

Fixed Income – Baird Core Plus Bond Inst.

Return Rank Quartile Chart through June 2015

(not annualized if less than 1 year)

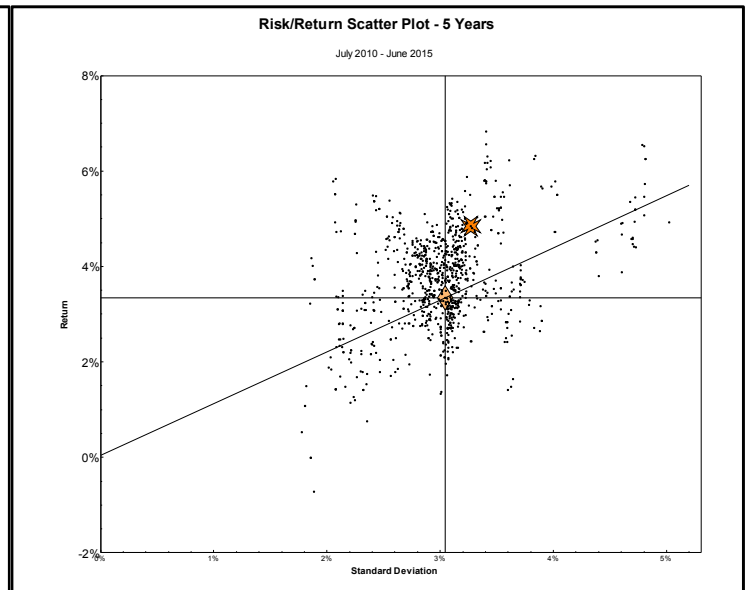
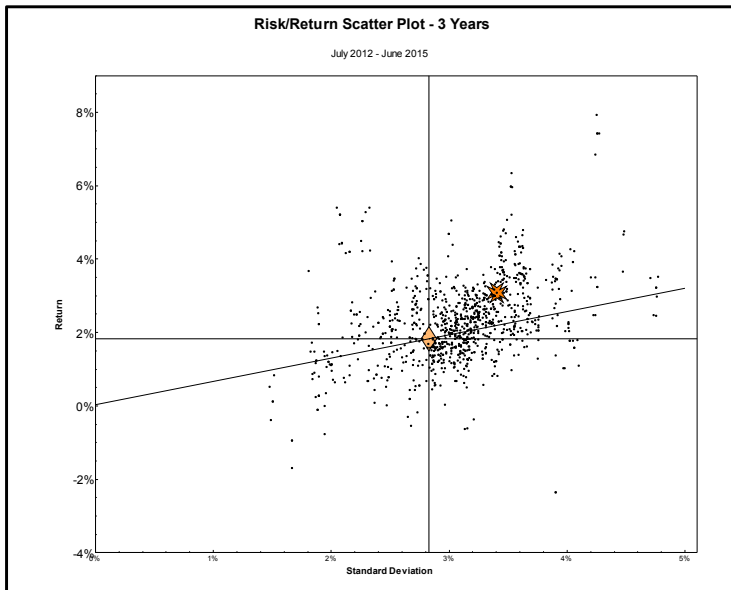
Morningstar Intermediate-Term Bond



Return through June 2015 (not annualized if less than 1 year)

Index = Barclays Capital U.S. Aggregate	1 quarter	YTD	1 year	3 years	5 years
	1106 mng	1100 mng	1081 mng	1031 mng	974 mng
5th Percentile	-0.52%	0.92%	2.43%	4.21%	5.37%
25th Percentile	-1.27%	0.31%	1.66%	2.91%	4.40%
Median	-1.65%	-0.03%	1.20%	2.24%	3.75%
75th Percentile	-1.85%	-0.31%	0.63%	1.61%	3.14%
95th Percentile	-2.08%	-0.81%	-0.91%	0.69%	2.15%
Baird Core Plus Bond Inst	-1.56%	0.22%	1.91%	3.09%	4.84%
Barclays Capital U.S. Aggregate	-1.68%	-0.10%	1.86%	1.83%	3.35%

Morningstar Intermediate-Term Bond



- ★ Baird Core Plus Bond Inst
- ◇ Market Benchmark: Barclays Capital U.S. Aggregate
- Morningstar Intermediate-Term Bond — Capital Market Line